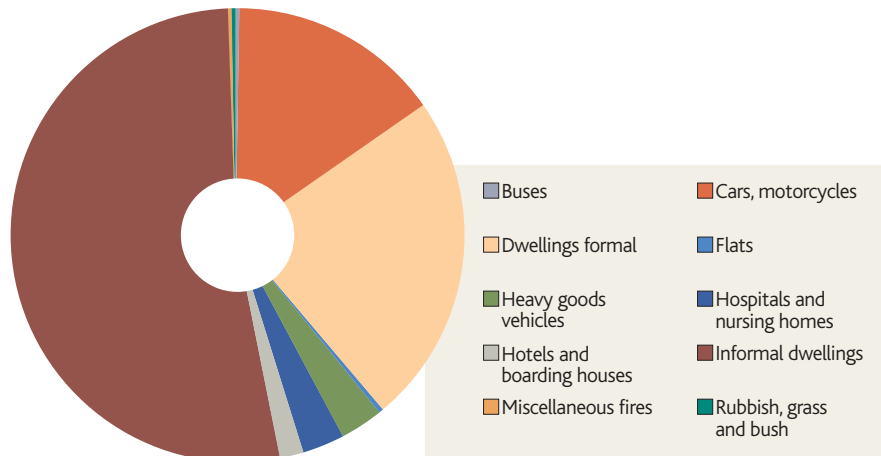


# South African National Fire Statistics 2009

## DEATHS

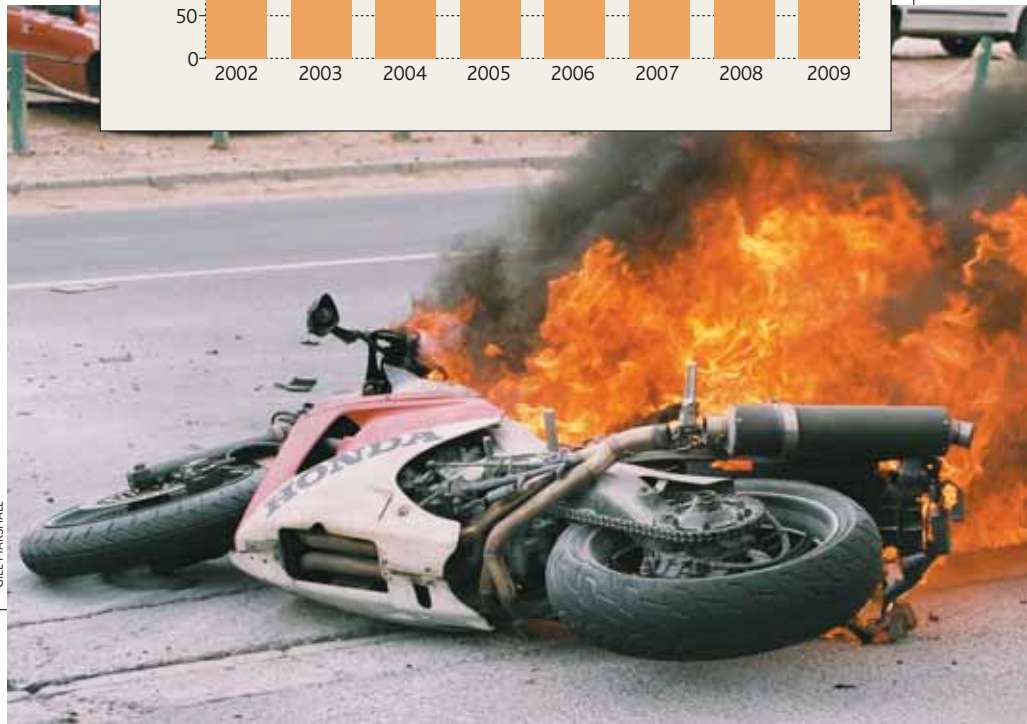
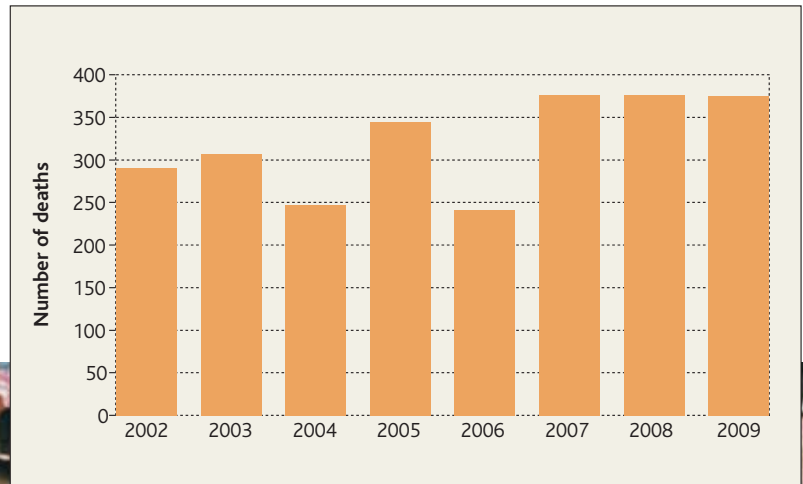
### Deaths by sector

Description	Adult and child
Buses	1
Cars, motorcycles	56
Dwellings formal	89
Flats	1
Heavy goods vehicles	12
Hospitals and nursing homes	11
Hotels and boarding houses	7
Informal dwellings	197
Miscellaneous fires	1
Rubbish, grass and bush	1
<b>Total</b>	<b>376</b>



### Deaths compared 2002 - 2009

Year	Total
2002	290
2003	306
2004	248
2005	348
2006	241
2007	376
2008	377
2009	376



GILL MARSHALL

## FIRE CAUSES

### Breakdown of fire losses of 2009

(Fire and emergency services in attendance)

Description	Smoking	Electrical	Open flames	Cooking	Heating	Welding	Lightning	Arson
Dwellings formal	86	800	686	373	240	26	30	219
Informal dwellings	56	406	1024	280	131	15	4	222
Flats	18	84	65	70	13	0	2	9
Hotels and boarding houses	3	19	7	4	4	1	1	2
Hospitals and nursing homes	7	16	9	1	5	1	0	7
Educational establishments	5	19	27	1	6	2	0	23
Churches and halls	0	12	10	5	2	0	0	3
Cinemas and theatres	0	3	0	0	1	0	0	0
Museums, libraries and art galleries	1	2	5	1	0	0	0	0
Night clubs and dance halls	1	2	1	0	1	0	0	4
Restuarants and cafes	4	31	17	52	6	0	1	2
Offices	7	91	30	8	28	3	0	16
Shops	6	99	48	28	43	6	1	16
Department stores	2	13	1	2	7	2	0	0
Garages and workshops	3	34	20	1	9	11	1	3
Warehouses	4	13	30	0	5	3	0	0
Outside storage	4	13	55	1	6	4	1	14
Furniture	1	3	4	1	1	0	0	0
Plastics and rubber	39	4	19	0	3	3	0	2
Textile	0	9	6	0	4	2	0	1
Printing	0	2	1	0	2	0	0	0
Milling	0	2	1	0	13	1	0	0
Petroleum	0	8	2	0	4	3	0	1
Food and drink	1	9	7	9	9	4	0	0
Paper and packaging	2	4	6	0	5	1	0	0
Chemical	2	6	6	0	9	4	0	0
Metal	2	11	16	0	19	8	0	1
Electronics	1	100	7	0	5	0	2	1
Mines (surface)	0	0	1	0	1	0	0	1
Utilities	0	63	9	0	1	1	0	2
Cars, motorcycles	32	567	248	0	65	56	1	128
Buses	0	26	15	0	26	7	0	12
Heavy goods vehicles	8	77	60	0	78	13	0	19
Ships	0	8	2	0	1	1	0	0
Trains	0	22	0	0	4	2	0	5
Aircraft	0	0	0	0	0	0	0	0
Rubbish, grass and bush	1587	105	14725	255	34	221	103	890
Plantations and forests	8	0	105	0	1	2	9	2
Agricultural	11	0	37	0	1	0	1	0
Miscellaneous fires	22	547	424	23	18	14	12	56
<b>TOTAL</b>	<b>1923</b>	<b>3230</b>	<b>17736</b>	<b>1115</b>	<b>811</b>	<b>417</b>	<b>169</b>	<b>1661</b>
<b>TOTAL FIRE %</b>	<b>4.75%</b>	<b>7.98%</b>	<b>43.81%</b>	<b>2.75%</b>	<b>2.00%</b>	<b>1.03%</b>	<b>0.42%</b>	<b>4.10%</b>

Unrest	Undetermined	Other	Total	Rand damage
0	1119	595	4175	495,170,058
4	1582	287	4008	101,174,052
0	56	37	354	31,858,641
0	17	8	66	38,899,991
0	11	8	65	4,626,129
0	32	22	137	11,840,594
0	10	5	47	1,205,879
0	5	2	10	228,000
0	2	7	16	5,379,300
0	3	1	13	3,384,500
0	13	18	144	58,971,670
0	30	38	249	110,317,817
0	54	28	329	81,054,462
0	8	11	46	9,040,550
0	33	11	126	49,094,080
0	14	10	79	353,741,558
0	55	7	160	21,984,663
0	4	1	15	21,806,192
0	23	3	96	60,446,873
0	9	7	38	9,122,312
0	2	6	13	26,151,250
0	2	3	22	5,838,581
0	1	1	20	80,827,800
0	11	9	59	34,028,938
0	3	3	24	6,919,910
0	22	4	53	11,718,053
0	12	5	74	27,434,205
0	35	19	170	22,297,170
0	1	1	5	6,005,000
0	24	14	114	2,711,915
1	623	250	1971	113,362,004
1	28	13	128	37,609,999
0	107	53	415	76,668,475
0	1	0	13	650,600
0	9	8	50	31,310,542
0	6	0	6	40,000
2	5636	1723	25281	13,377,254
0	21	12	160	3,978,432
0	7	7	64	1,882,500
0	278	271	1666	41,538,863
8	9909	3508	40481	2,013,698,822
<b>0.02%</b>	<b>24.48%</b>	<b>8.67%</b>		

## FIRE CAUSES

### Breakdown of fires exceeding R5 million

Description	Smoking	Electrical	Open flames	Cooking	Heating	Welding	Lightning	Arson
Cars and motorcycles	1	50	24	0	3	0	0	14
Chemical	0	0	0	0	0	0	0	0
Dwelling formal	34	340	319	238	190	18	20	95
Electronics	0	4	0	0	0	0	0	0
Flats	1	11	16	30	7	0	0	0
Food and drink	0	2	0	0	3	3	0	0
Furniture	0	0	0	0	0	0	0	0
Garages and workshops	1	1	1	0	2	0	0	0
Heavy goods vehicles	0	1	2	0	2	1	0	0
Hotels and boarding houses	1	2	2	0	0	1	0	0
Informal dwellings	2	12	48	5	2	1	0	2
Metal	0	1	4	0	5	4	0	0
Mines (surface)	0	0	0	0	0	0	0	0
Miscellaneous fires	0	2	4	0	0	0	0	0
Offices	0	3	0	0	1	0	0	1
Outside Storage	0	3	3	0	0	0	0	1
Paper and packaging	0	0	1	0	0	0	0	0
Petroleum	0	0	0	0	1	0	0	0
Plastics and rubber	0	0	2	0	0	0	0	0
Printing	0	0	0	0	1	0	0	0
Restaurants and cafes	0	0	0	0	0	0	1	0
Rubbish grass and bush	0	0	0	0	0	0	0	354
Shops	2	20	17	13	30	6	0	0
Trains	0	5	0	0	2	2	0	0
Warehouses	1	1	3	0	0	1	0	0

### Compared fire losses 2002 - 2009

	2002	2003	2004	2005	2006	2007	2008	2009
Total loss in Rands	1181.6	4833.8	1211.9	1321.5	2732.9	1630.6	2312.5	2013.6
GNI	1070.4	1184.0	1346.5	1492.2	1705.3	1935.5	2209.9	2342.4
Fire loss as a % of GNI	1%	4.08%	0.90%	0.89%	1.60%	0.84%	1.04%	0.85%
No. of fires	47.7	38.6	36.5	42.8	26.4	40.5	35.4	40.4
Population	45.5	46.4	46.9	46.9	47.8	48.6	49.3	49.9

**Notes to table:**

Total loss in millions

GNI Gross National Income - in thousand millions

Number of fires in thousands

Population in millions

Unrest	Undetermined	Other	Total	Rand damage
0	145	46	283	25,969,000
0	1	0	1	5,000,000
0	606	372	2232	306,437,100
0	0	0	4	5,104,000
0	0	4	69	7,756,750
0	0	0	8	31,585,000
0	2	0	2	20,002,000
0	3	1	9	15,092,000
0	18	0	24	14,413,600
0	3	3	12	27,431,453
0	122	28	222	13,782,600
0	6	1	21	15,600,000
0	0	1	1	5,000,000
0	6	2	14	23,025,000
0	0	7	12	90,050,000
0	1	2	10	5,311,000
0	1	0	2	6,000,000
0	0	0	1	80,000,000
0	0	0	2	50,000,000
0	0	1	2	25,000,000
0	1	0	2	33,000,000
0	0	0	354	5,000,000
0	4	1	93	26,808,000
0	1	1	11	20,061,000
0	6	5	17	333,881,000

### Compared number of fires 2002 - 2009

Year	Number of fires
2002	47699
2003	38631
2004	36591
2005	42863
2006	26475
2007	40582
2008	35432
2009	40481

## FIRE LOSSES

### Breakdown of occupancy 2009

Description	Number of incidents
Dwellings formal	4175
Informal dwellings	4008
Flats	354
Hotels and boarding houses	66
Hospitals and nursing homes	65
Educational establishments	137
Churches and halls	47
Cinemas and theatres	10
Museums, libraries and art galleries	16
Night clubs and dance halls	13
Restaurants and cafes	144
Offices	249
Shops	329
Department stores	46
Garages and workshops	126
Warehouses	79
Outside storage	160
Furniture	15
Plastics and rubber	96
Textile	38
Printing	13
Milling	22
Petroleum	20
Food and drink	59
Paper and packaging	24
Chemical	53
Metal	74
Electronics	170
Mines (surface)	5
Utilities	114
Cars, motorcycles	1971
Buses	128
Heavy goods vehicles	415
Ships	13
Trains	50
Aircraft	6
Rubbish, grass and bush	25281
Plantations and forests	160
Agricultural	64
Miscellaneous fires	1666
<b>TOTAL</b>	<b>40481</b>

## BRIGADE CALLS 2009

	RESIDENTIAL					INSTITUTIONAL		PUBLIC ASSEMBLY					COMMERCIAL				STORAGE			
	Dwelling	Informal dwellings	Flats	Hotels/Boarding houses	Hospitals/nursing	Educational establs.	Churches/halls	Cinemas/theatres	Museums etc.	Night clubs/dance	Restaurants/cafes	Offices	Shops	Dept. stores	Garages/workshops	Warehouses	Outside storage	Furniture	Plastics/rubber	Textile
Abaqulusi Municipality	13	3	-	-	-	1	-	-	-	-	1	-	-	-	-	-	-	-	-	-
Baviaans Municipality Fire Department	1	-	-	-	-	-	-	-	-	-	-	-	-	-	-	-	-	-	-	-
Blue Crane Route Municipality Fire Department	3	8	4	-	-	-	-	-	-	-	-	-	-	-	-	-	1	-	-	
Breedevallei Municipality	58	83	1	1	-	-	-	-	-	2	1	2	-	-	2	3	-	-	-	
Camdeboo Local Municipality	3	7	-	-	-	-	-	-	-	1	-	-	-	-	-	-	-	-	-	
City Of Cape Town Fire & Rescue Services	1166	1086	101	26	16	59	13	2	6	4	54	70	78	20	42	15	56	6	5	16
Ekurhuleni Metropolitan Municipality	376	392	9	11	3	4	9	1	6	8	16	26	1	17	9	11	2	10	4	
Emadlangeni Protection Services	-	3	-	-	-	-	-	-	-	-	-	-	-	-	-	-	-	-	-	
Emfuleni Municipalit Fire & EMS	105	112	5	3	1	3	-	1	-	-	1	1	6	-	1	-	-	-	-	
Emnambithi Protection Services	8	8	-	1	-	-	-	-	-	-	-	-	-	-	-	-	-	-	-	
Ethekwini Unicity Municipality	514	463	78	4	21	27	6	1	4	2	34	47	48	2	25	25	61	3	8	10
Govan Mbeki Municipality	82	106	4	1	-	-	-	-	-	-	6	-	-	-	-	-	-	-	-	
Hibiscus Coast Municipality	79	144	-	-	-	3	-	-	-	1	1	3	-	-	-	-	-	-	-	
Johannesburg EMS	352	268	10	1	2	1	4	5	-	-	2	5	16	1	4	7	3	1	-	1
Koukamma Municipality	-	2	-	-	-	-	-	-	-	-	-	-	-	-	-	-	-	-	-	
Kwa-Dukuza Fire Department	26	48	3	1	-	-	-	-	-	-	1	2	-	-	-	1	-	5	-	
Langerberg Municipality Fire Department	1	1	-	-	-	-	-	-	-	1	-	-	-	-	-	1	-	-	-	
Lesedi Municipality EMS	23	25	2	-	-	-	-	-	-	1	1	1	-	-	-	-	-	-	-	
Lukhanje Fire & EMS	22	33	-	1	2	3	-	-	1	-	1	2	3	1	-	2	1	-	3	
Makana Local Municipality	23	13	-	-	-	1	-	-	-	-	-	-	-	-	-	1	-	-	-	
Mangaung Local Municipality	114	144	2	2	5	7	-	-	-	-	2	5	14	1	2	1	1	-	2	
Metsimaholo Municipality	48	44	1	-	-	-	-	-	-	-	1	3	-	-	-	-	-	-	-	
Mogalakwena Municipality	31	-	-	-	-	-	-	-	-	-	-	1	-	-	-	1	-	-	1	
Mohokare Local Municipality	-	-	-	-	-	-	-	1	-	-	-	-	-	-	-	-	-	-	-	
Moqhaka Municipality	6	6	-	-	-	-	-	-	-	-	-	-	-	-	-	-	-	-	-	
Mossel Bay Fire & Rescue	42	68	3	2	-	1	-	-	-	1	-	1	-	1	1	-	-	-	-	
Nala Local Council EMS	-	13	-	-	-	-	-	-	-	-	-	-	-	-	-	-	-	-	-	
Nelson Mandela Metro	155	243	31	3	6	10	5	-	-	-	6	8	11	4	8	1	7	-	5	2
Pietermaritzburg Fire Services	122	155	8	5	4	7	5	-	3	-	7	12	13	3	7	3	5	-	2	2
Polokwane Municipality	40	50	1	-	-	-	-	-	-	-	-	3	-	1	-	1	1	-	-	
Saldanha Bay	10	9	-	1	-	-	-	-	-	-	-	-	-	-	-	-	-	-	-	
Sedibeng District Municipality	18	23	-	1	-	-	-	-	-	-	-	-	-	1	1	4	-	-	2	
Steve Tshwete Fire Department (Hendrina)	3	11	-	-	-	-	1	-	-	-	-	-	-	-	-	-	-	-	1	
Steve Tshwete Fire Department (Middleburg)	24	19	1	-	-	1	-	-	-	-	-	-	2	-	-	1	-	2	-	
Thaba Chweu Municipality	4	48	3	-	-	-	-	-	-	-	-	-	-	-	-	-	-	-	-	
Tshwane Metro Municipality	604	258	69	2	4	6	3	-	1	1	16	66	89	10	13	11	1	1	1	
Umdoni Fire Department	28	82	12	-	-	-	-	-	-	-	5	1	3	1	1	-	-	49	-	
Umlhathuze Municipality	47	29	6	-	1	3	-	-	-	-	3	3	1	1	-	1	-	2	-	
Umtshezi Fire And Rescue	24	1	-	-	-	1	-	-	-	-	2	3	-	2	-	-	-	1	-	
<b>TOTAL</b>	<b>4104</b>	<b>3978</b>	<b>348</b>	<b>66</b>	<b>64</b>	<b>133</b>	<b>47</b>	<b>10</b>	<b>16</b>	<b>13</b>	<b>144</b>	<b>244</b>	<b>323</b>	<b>45</b>	<b>123</b>	<b>79</b>	<b>159</b>	<b>15</b>	<b>93</b>	<b>38</b>

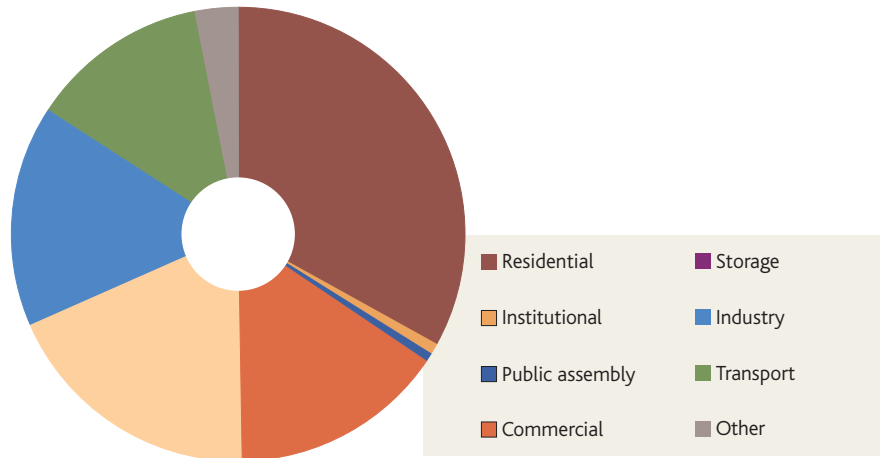
INDUSTRY											TRANSPORT					OTHER				TOTAL	
Printing	Milling	Petroleum	Food/drink	Paper/ Packaging	Chemical	Metal	Electronics	Mines (surface)	Utilities	Cars/ motorcycles	Busses	Heavy goods vehicles	Ships	Trains	Aircraft	Rubbish/grass/ bush	Plantations/ forests	Agricultural	Miscellaneous		
-	-	-	-	-	-	-	-	-	-	-	-	2	-	-	-	7	-	-	1	28	Abaqulusi Municipality
-	-	-	-	-	-	-	-	-	-	-	-	-	-	-	-	-	2	1	-	4	Baviaans Municipality Fire Department
-	-	-	-	-	-	-	-	-	-	9	-	-	-	-	-	121	-	-	-	146	Baviaans Municipality Fire Department
-	-	-	1	-	1	-	1	-	1	120	6	23	-	1	-	246	-	-	-	553	Breedevallei Municipality
-	-	-	-	-	-	-	-	-	-	1	-	2	-	-	-	18	-	-	-	32	Camdeboo Local Municipality
7	6	6	19	7	6	15	10	1	12	455	20	41	8	9	7099	22	9	522	11115	City Of Cape Town Fire & Rescue Services	
1	5	1	8	2	14	21	32	2	15	130	5	29	-	11	4	1113	11	1	76	2396	Ekurhuleni Metropolitan Municipality
-	-	-	-	-	-	-	-	-	-	-	-	-	-	-	-	-	-	-	-	3	Emadlangeni Protection Services
-	-	-	-	-	-	-	4	-	-	15	1	3	-	-	1	235	-	-	2	500	Emfuleni Municipalit Fire & EMS
-	-	-	-	-	-	-	-	-	-	5	-	1	-	-	-	154	-	-	10	187	Emnambithi Protection Services
4	3	9	6	8	13	5	8	1	14	330	27	74	3	6	5175	35	12	447	7563	Ethekwini Unicity Municipality	
-	-	-	-	-	-	-	-	-	-	23	5	-	-	-	-	354	-	-	-	581	Govan Mbeki Municipality
-	-	-	-	-	1	-	11	-	-	35	1	13	-	1	1	426	-	-	85	805	Hibiscus Coast Municipality
-	-	-	-	-	-	-	32	1	14	171	2	4	-	3	-	1179	-	-	90	2179	Johannesburg EMS
-	-	-	-	-	-	-	-	-	-	-	-	-	-	-	-	22	-	-	-	24	Koukamma Municipality
-	-	-	-	-	-	-	-	-	-	25	-	-	-	-	-	286	-	-	6	404	Kwa-Dukuza Fire Department
-	-	-	1	-	-	-	-	-	-	-	-	-	-	-	-	-	-	-	5	10	Langerberg Municipality Fire Department
-	-	-	-	-	-	-	-	-	-	8	-	18	-	-	-	153	-	-	12	244	Lesedi Municipality EMS
-	-	1	-	-	-	-	-	-	-	17	1	4	-	-	-	106	1	-	2	207	Lukhanje Fire & EMS
-	-	-	-	-	-	-	-	-	-	4	-	1	-	-	-	82	12	-	7	144	Makana Local Municipality
-	-	-	2	-	-	1	-	-	28	50	2	11	-	2	-	638	-	-	3	1039	Mangaung Local Municipality
-	-	-	-	1	-	-	2	-	-	6	-	3	-	-	-	324	-	1	-	434	Metsimaholo Municipality
-	-	-	-	-	-	-	10	-	-	21	1	9	-	-	-	150	-	-	-	225	Mogalakwena Municipality
-	-	-	-	-	-	-	-	-	-	-	-	-	-	-	-	-	-	-	-	1	Mohokare Local Municipality
-	-	-	-	-	-	-	1	-	2	7	-	-	-	-	-	76	-	-	4	102	Moqhaka Municipality
-	-	-	-	-	-	-	-	-	-	10	1	-	1	-	-	423	-	3	35	593	Mossel Bay Fire & Rescue
-	-	-	-	-	-	-	-	-	-	2	-	1	-	-	-	30	-	-	6	52	Nala Local Council EMS
1	-	-	2	-	2	7	1	-	2	61	8	14	1	2	529	2	1	32	1170	Nelson Mandela Metro	
-	5	-	1	-	2	5	3	-	13	63	5	39	-	1	-	1229	6	5	67	1807	Pietermaritzburg Fire Services
-	-	-	-	-	-	2	10	-	-	30	4	6	-	2	-	330	6	-	11	498	Polokwane Municipality
-	-	-	-	-	-	-	-	-	-	3	-	-	-	3	-	28	4	-	-	58	Saldanha Bay
-	-	-	-	-	-	-	-	-	1	15	2	5	-	-	-	207	-	-	2	282	Sedibeng District Municipality
-	-	-	1	-	-	-	-	-	2	3	-	1	-	-	-	102	-	-	-	125	Steve Tshwete Fire Department (Hendrina)
-	-	-	-	-	-	-	2	-	7	13	-	8	-	1	-	410	-	2	1	494	Steve Tshwete Fire Department (Middleburg)
-	-	-	-	-	-	-	-	-	-	-	-	2	-	-	-	78	16	6	11	168	Thaba Chweu Municipality
-	3	1	8	3	1	15	-	-	1	250	35	57	-	5	-	2991	6	-	185	4717	Tshwane Metro Municipality
-	-	-	10	2	9	1	-	-	1	47	-	24	-	-	-	360	16	24	23	699	Umdoni Fire Department
-	-	2	-	1	4	2	41	-	1	39	1	13	-	2	-	544	22	-	8	777	Umhlatuze Municipality
-	-	-	-	-	-	-	2	-	-	3	1	7	-	1	-	54	-	-	13	115	Umtshezi Fire And Rescue
13	22	18	59	23	49	72	127	5	113	1929	126	395	13	47	6	24683	138	64	1645	40481	TOTAL



## FIRE LOSSES: FINANCIAL

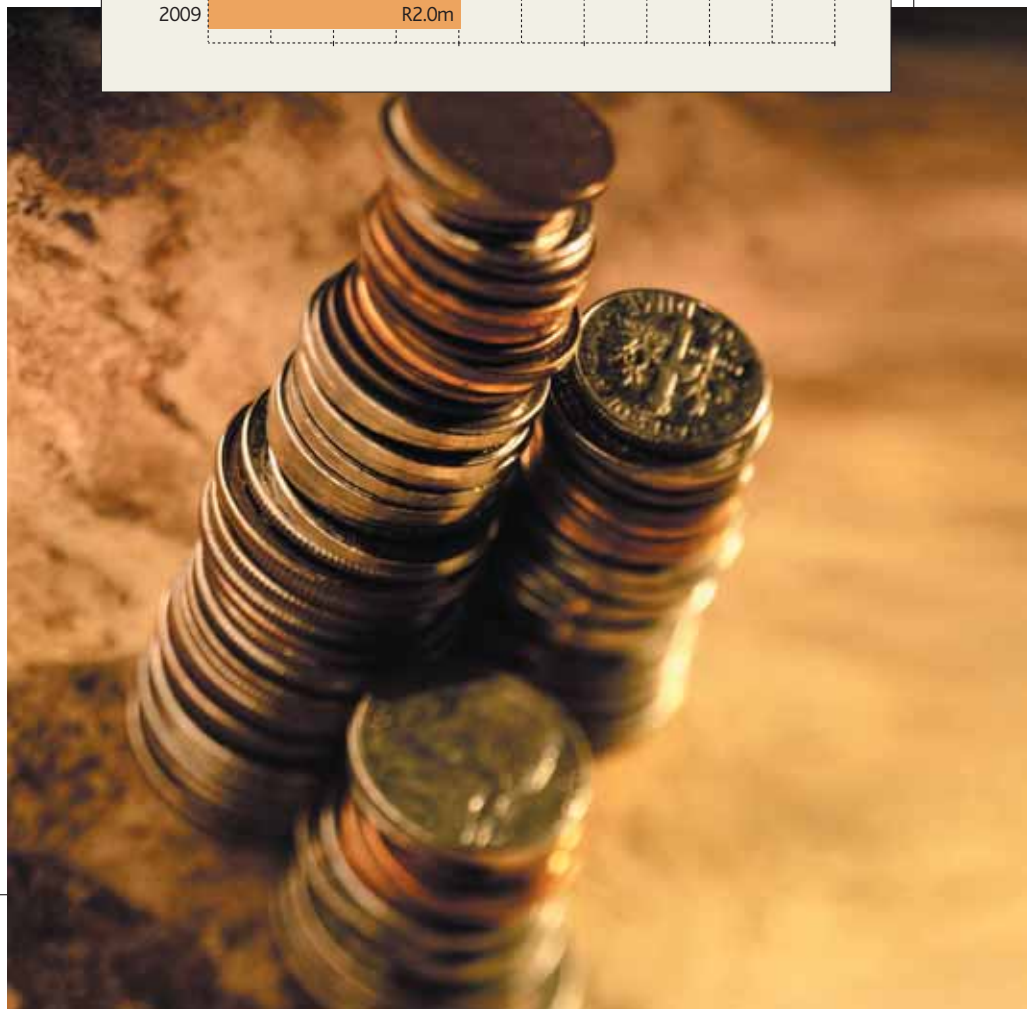
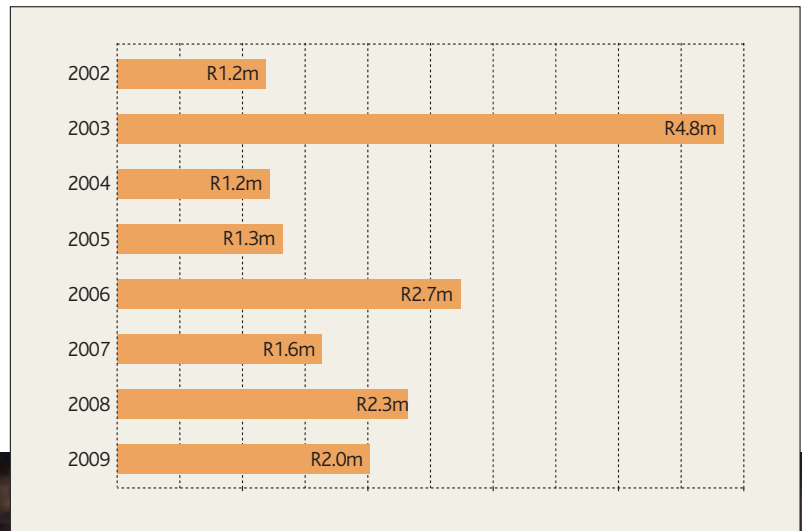
### Compared fire losses 2009

Description	R Sum of damage
Residential	667,102,743
Institutional	16,466,724
Public assembly	10,197,679
Commercial	308,478,581
Storage	375,726,221
Industry	315,308,200
Transport	259,641,622
Other	60,777,049
<b>Total</b>	<b>2,013,698,822</b>



### Compared financial losses 2002-2009

Year	R Damage
2002	1,181,641,778
2003	4,833,873,434
2004	1,211,926,334
2005	1,321,494,810
2006	2,732,970,948
2007	1,630,663,463
2008	2,312,573,486
2009	2,013,698,822



## FIRE LOSSES: INDUSTRIAL

### Compared industrial fire losses 2008 - 2009

Description	Damage		
	2008	2009	2009 incidents
Furniture	R 4,027,900	R 21,806,192	15
Plastics and rubber	R 135,764,300	R 60,446,873	96
Textile	R 12,580,500	R 9,122,312	38
Printing	R 5,740,000	R 26,151,250	13
Milling	R 152,621,100	R 5,838,581	22
Petroleum	R 152,193,000	R 80,827,800	20
Food and drink	R 167,005,500	R 34,028,938	59
Paper and packaging	R 1,941,500	R 6,919,910	24
Chemical	R 321,684,750	R 11,718,053	53
Metal	R 28,471,000	R 27,434,205	74
Electronics	R 4,343,500	R 22,297,170	170
Mines (surface)	R 500,000	R 6,005,000	5
Utilities	R 141,989,500	R 2,711,915	114
<b>TOTAL</b>	<b>R 1,128,862,550</b>	<b>R 315,308,200</b>	<b>703</b>

### Compared industrial fire calls 2003 - 2009

#### Number of incidents

Description	2003	2004	2005	2006	2007	2008	2009
Furniture	42	44	47	27	414	55	15
Plastics and rubber	58	65	63	33	94	73	96
Textile	45	65	61	45	67	34	38
Printing	5	12	9	6	18	8	13
Milling	19	16	33	10	21	21	22
Petroleum	9	9	22	13	21	16	20
Food and drink	53	47	46	43	50	35	59
Paper and packaging	28	35	37	25	226	27	24
Chemical	44	52	33	26	345	79	53
Metal	46	51	85	38	80	69	74
Electronics	152	132	116	129	135	191	170
Mines (surface)	11	10	11	2	54	10	5
Utilities	141	121	78	38	150	110	114
<b>TOTAL</b>	<b>653</b>	<b>659</b>	<b>641</b>	<b>435</b>	<b>1675</b>	<b>728</b>	<b>703</b>

## FIRE LOSSES: RESIDENTIAL

Compared residential fire losses 2004 -2009

ZA Rand per year

Description	2004	2005	2006	2007	2008	2009
Dwellings formal	151,123,212	240,213,106	1,953,447,608	387,890,154	387,199,972	495,170,058
Informal dwellings	286,929,364	58,351,067	39,488,351	105,547,103	76,827,903	101,174,052
Flats	18,316,482	25,951,470	24,699,595	42,713,920	29,625,287	31,858,641
Hotels and boarding houses	35,751,850	25,540,625	6,280,550	37,120,250	11,313,775	38,899,991
<b>TOTAL</b>	<b>492,120,909.00</b>	<b>350,056,268</b>	<b>2,023,916,104</b>	<b>573,271,427</b>	<b>504,966,938</b>	<b>667,102,743</b>

### Estimated residential (informal) fire losses

Year	Damage
2002 (3709)	41,523,039
2003 (3562)	31,197,541
2004 (3566)	286,929,364
2005 (3342)	58,351,067
2006 (3105)	39,488,351
2007 (4273)	105,547,103
2008 (3279)	76,827,903
2009 (4008)	101,174,052

JUHANI KUUSI / GALLO IMAGES

